

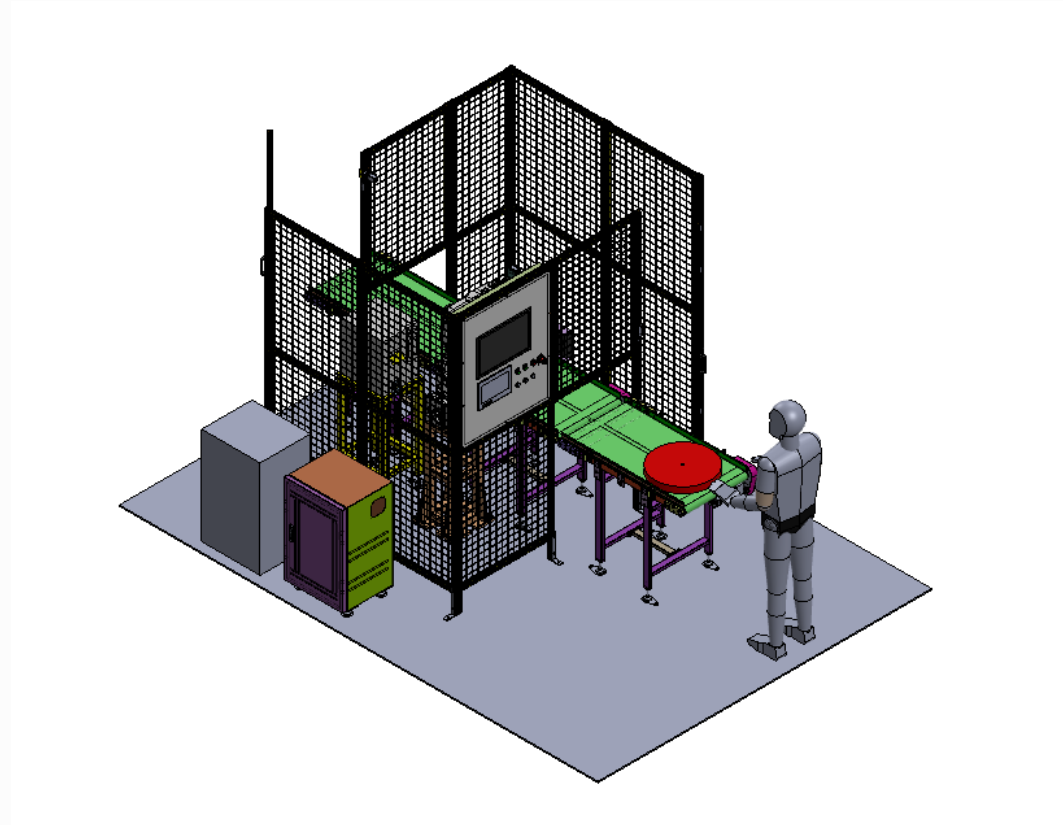
Auto labeling machine
Made for PANASONIC AUTOMOTIVE SYSTEMS ASIA PACIFIC CO.,LTD.

TOMAS TECH CO., LTD.

Make by Nattapol (IoT Engineer)

| Agenda

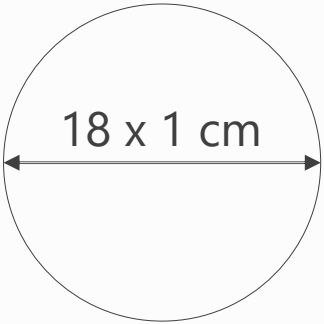
- ▶ Packet material
- ▶ Layout machine
- ▶ Process flow
- ▶ Operation flow



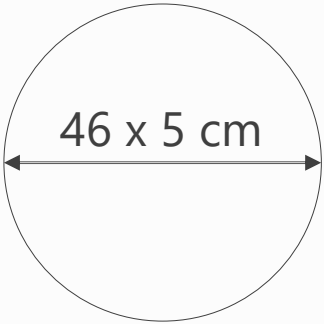
Packet material

Packet material

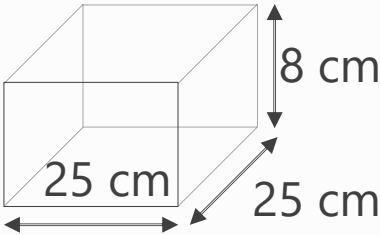
ขนาดของ Packet Material		
No.	Type	Size
1	Small Reel เล็กสุด	18x1 cm.
2	Big Reel ใหญ่สุด	46x5 cm
3	PCB	25x25x8 cm
	กล่อง	
4	- สูงสุด	38x40x26 cm
5	- กว้างสุด	41x41x5 cm
6	- ยาวสุด	27x64x21 cm
7	- เล็กสุด	19x19x5 cm



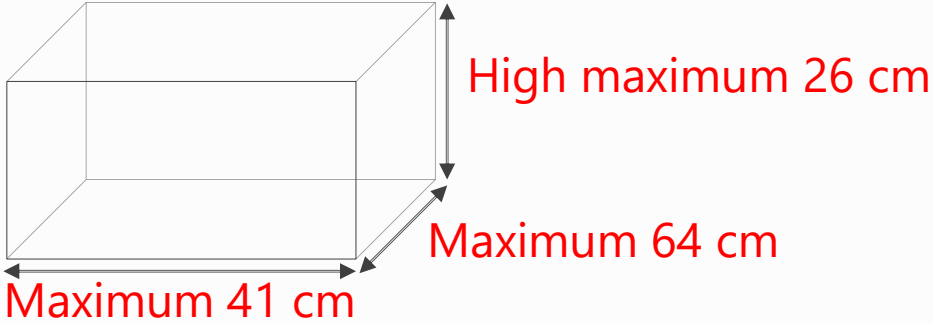
1. Small Reel



2. Big Reel



3. PCB



4. Box

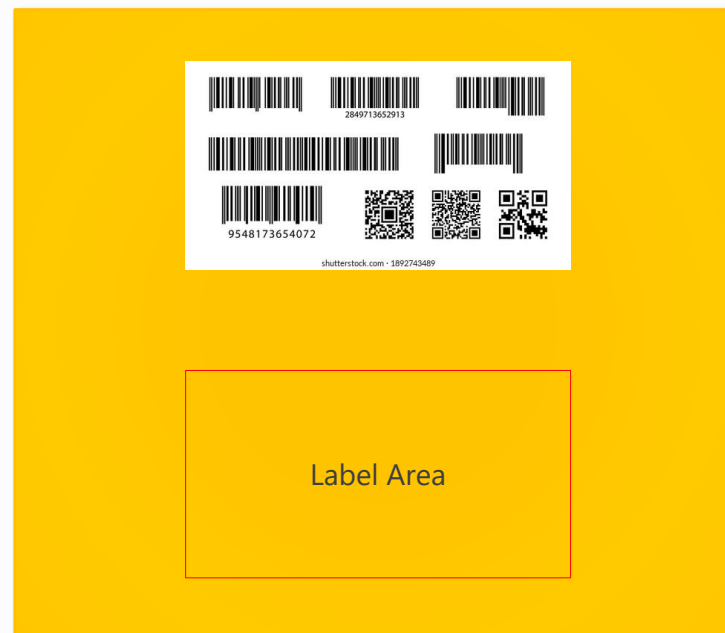
| Packet material

Packet materials that can participate in the Auto process

Reels

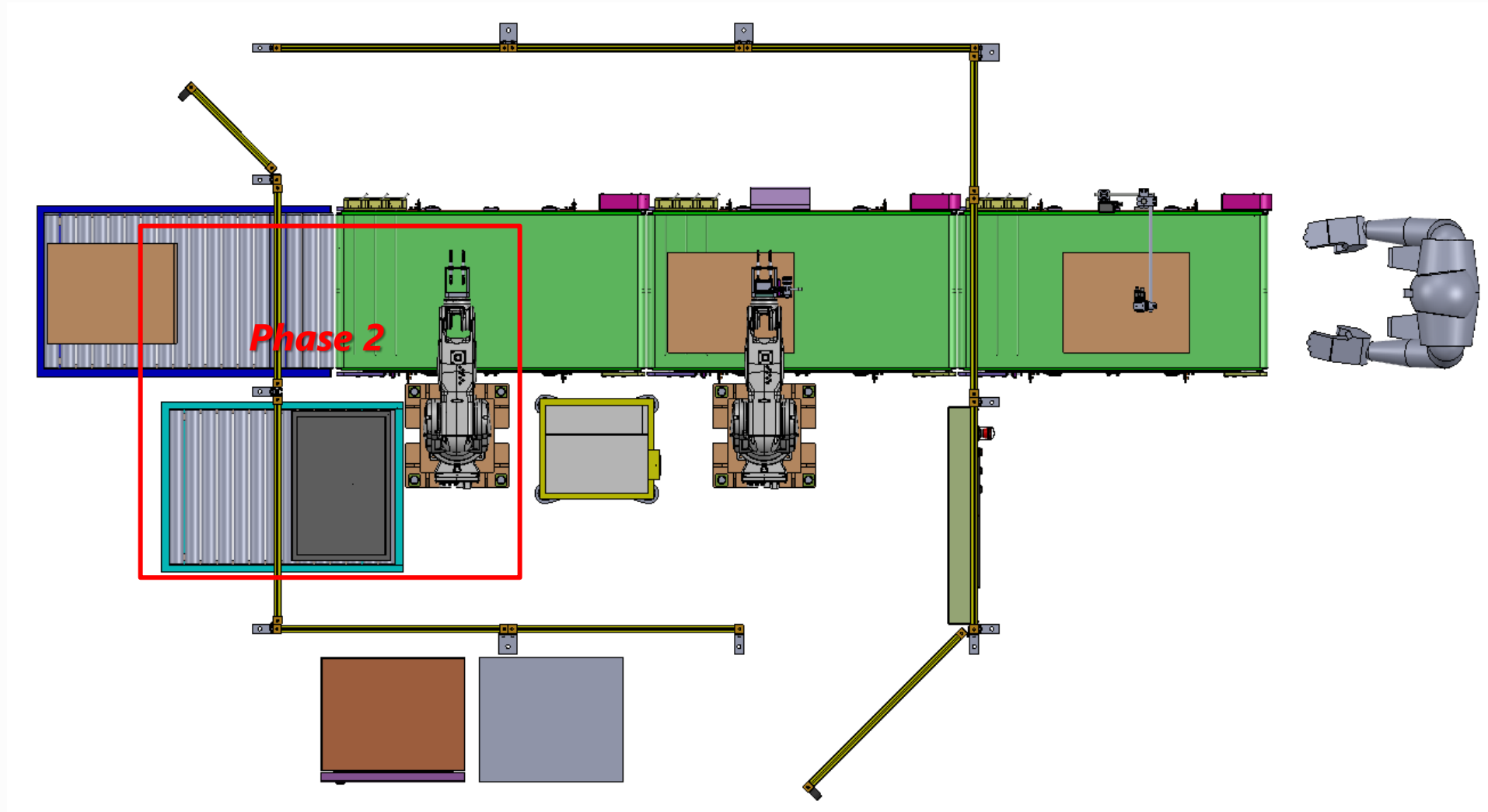


Box or PCB (label on top)

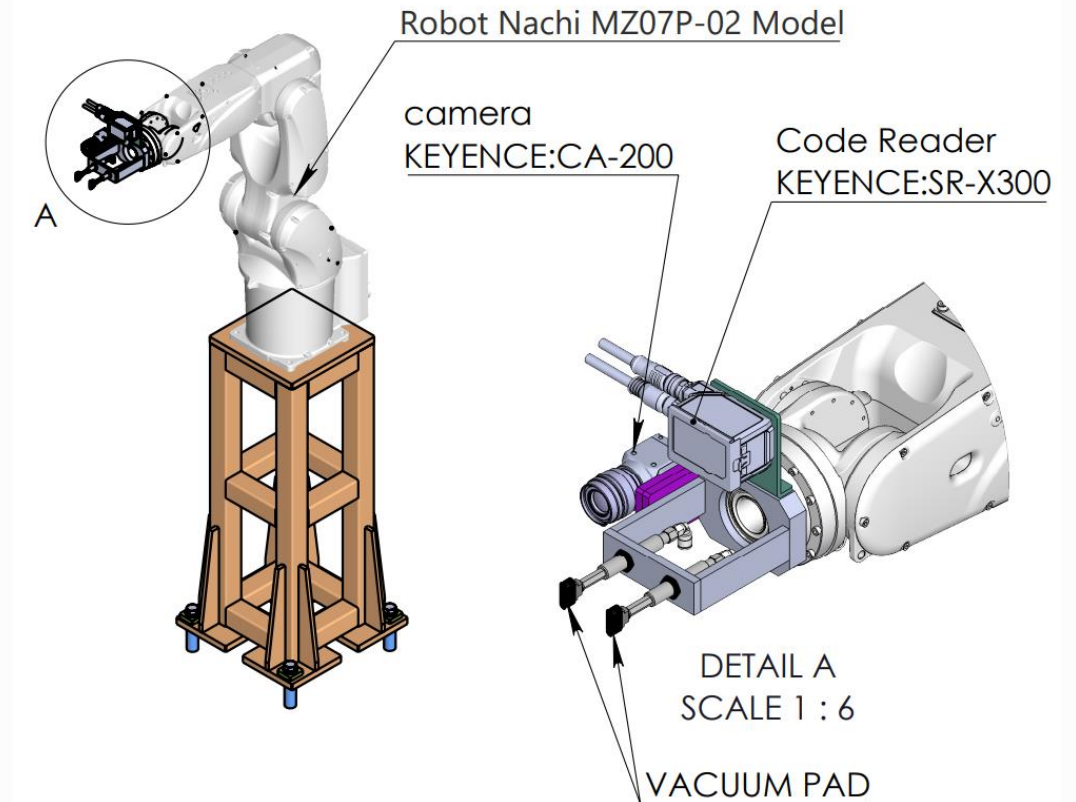
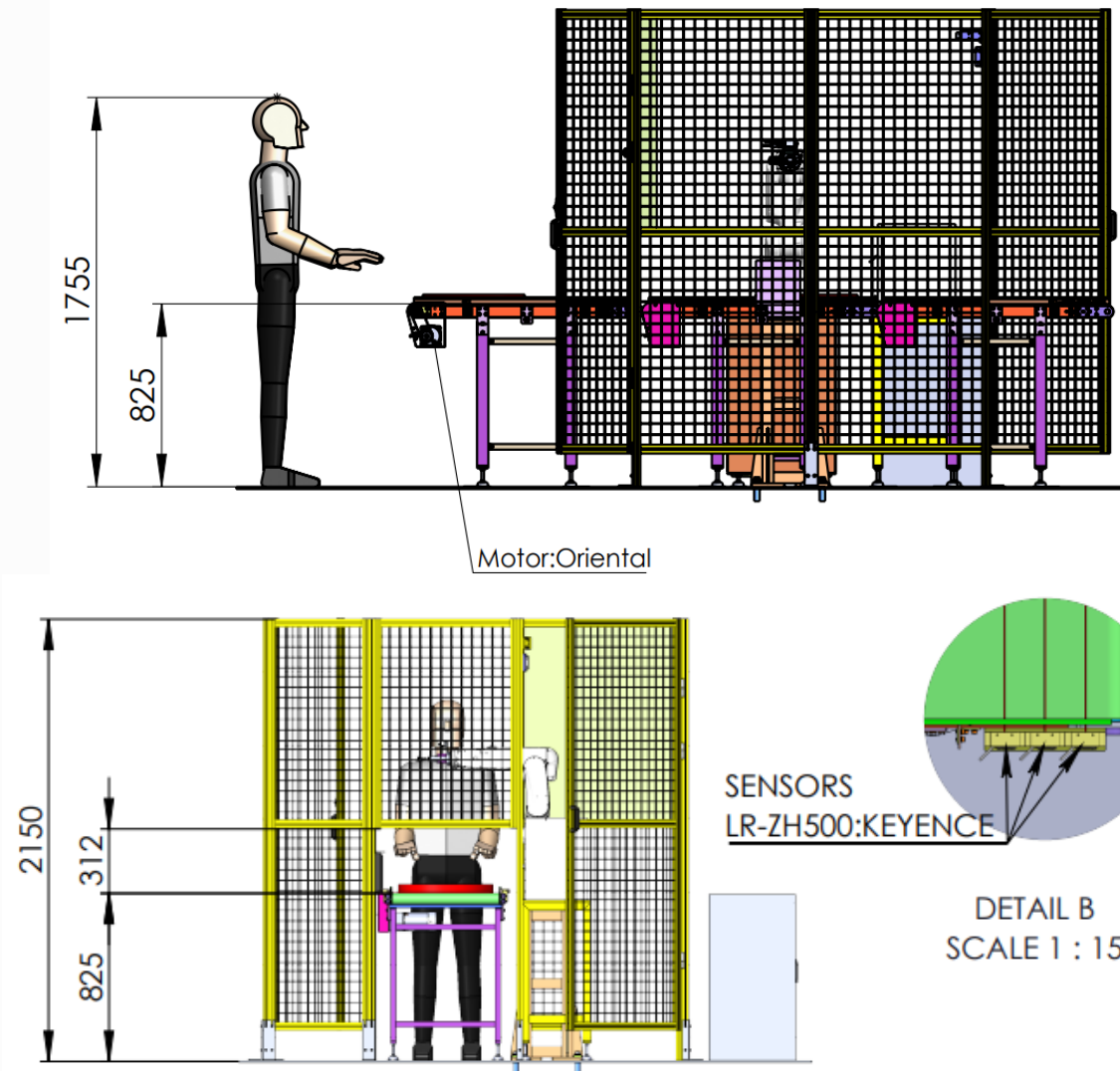


Layout machine

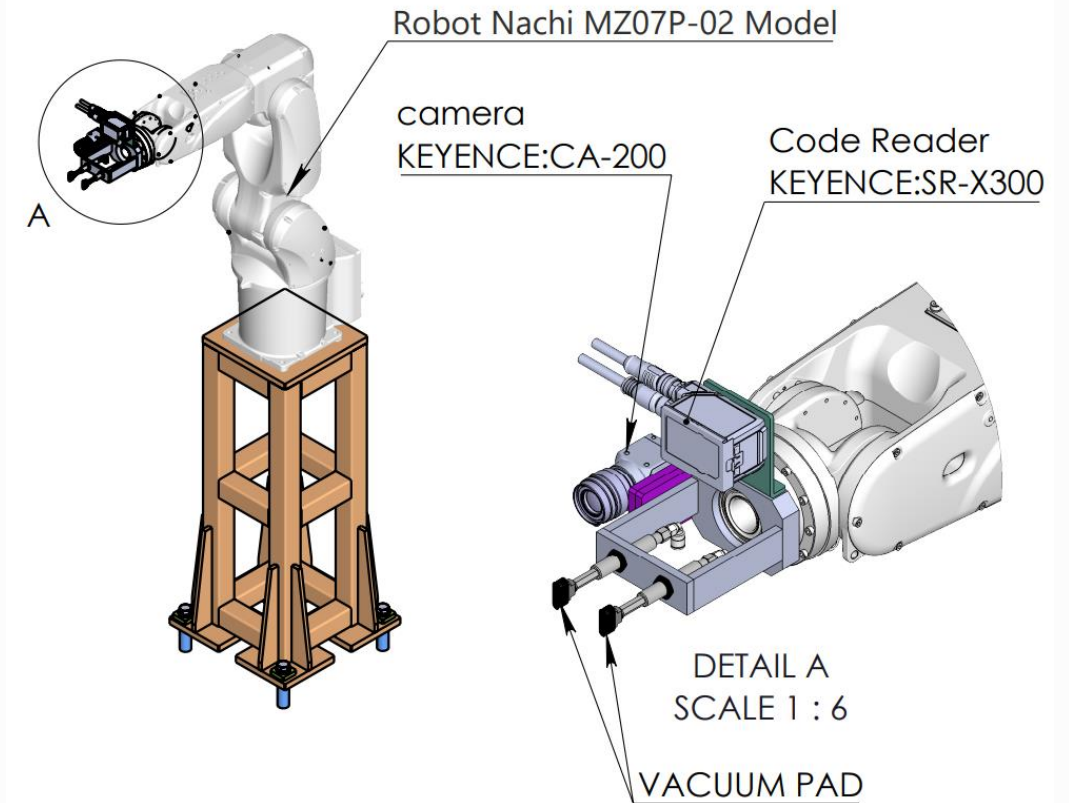
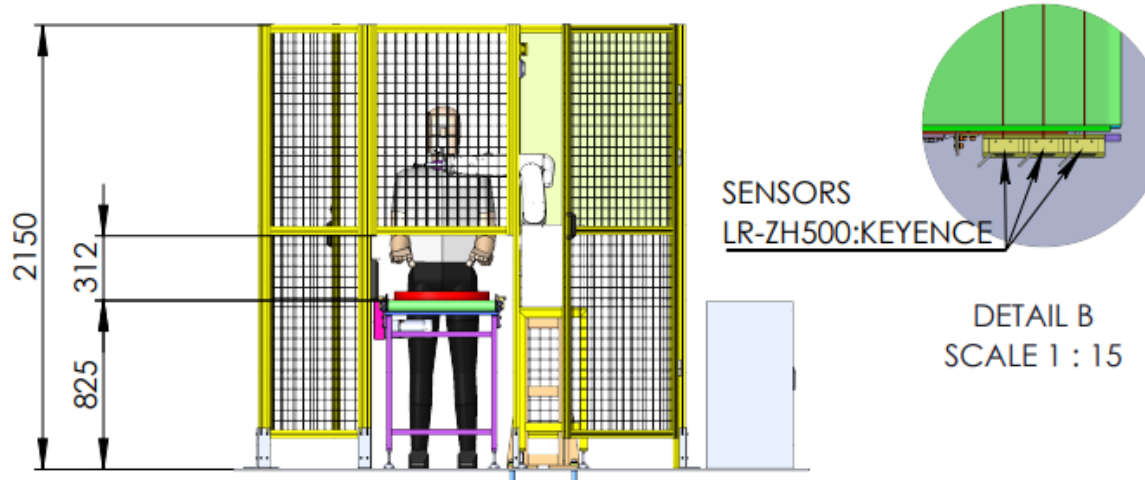
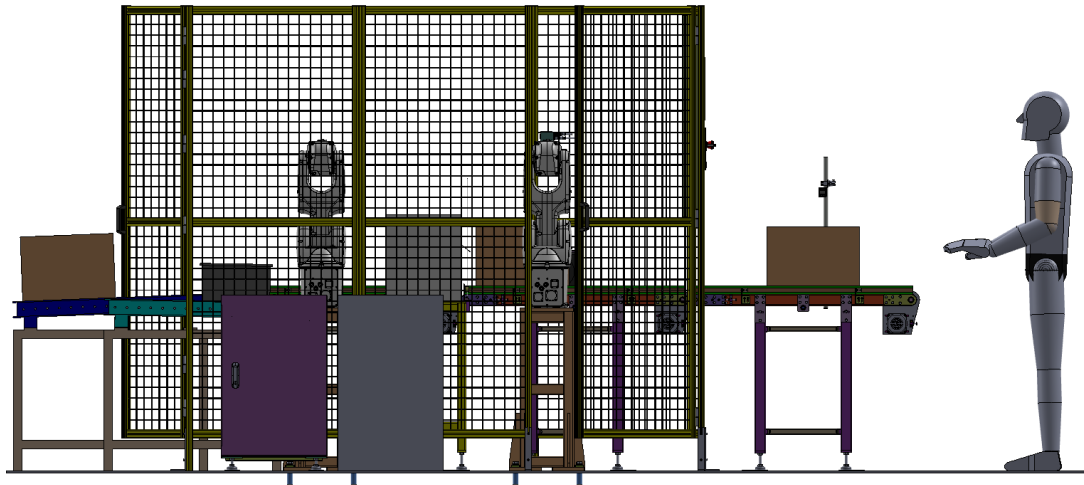
| Layout machine



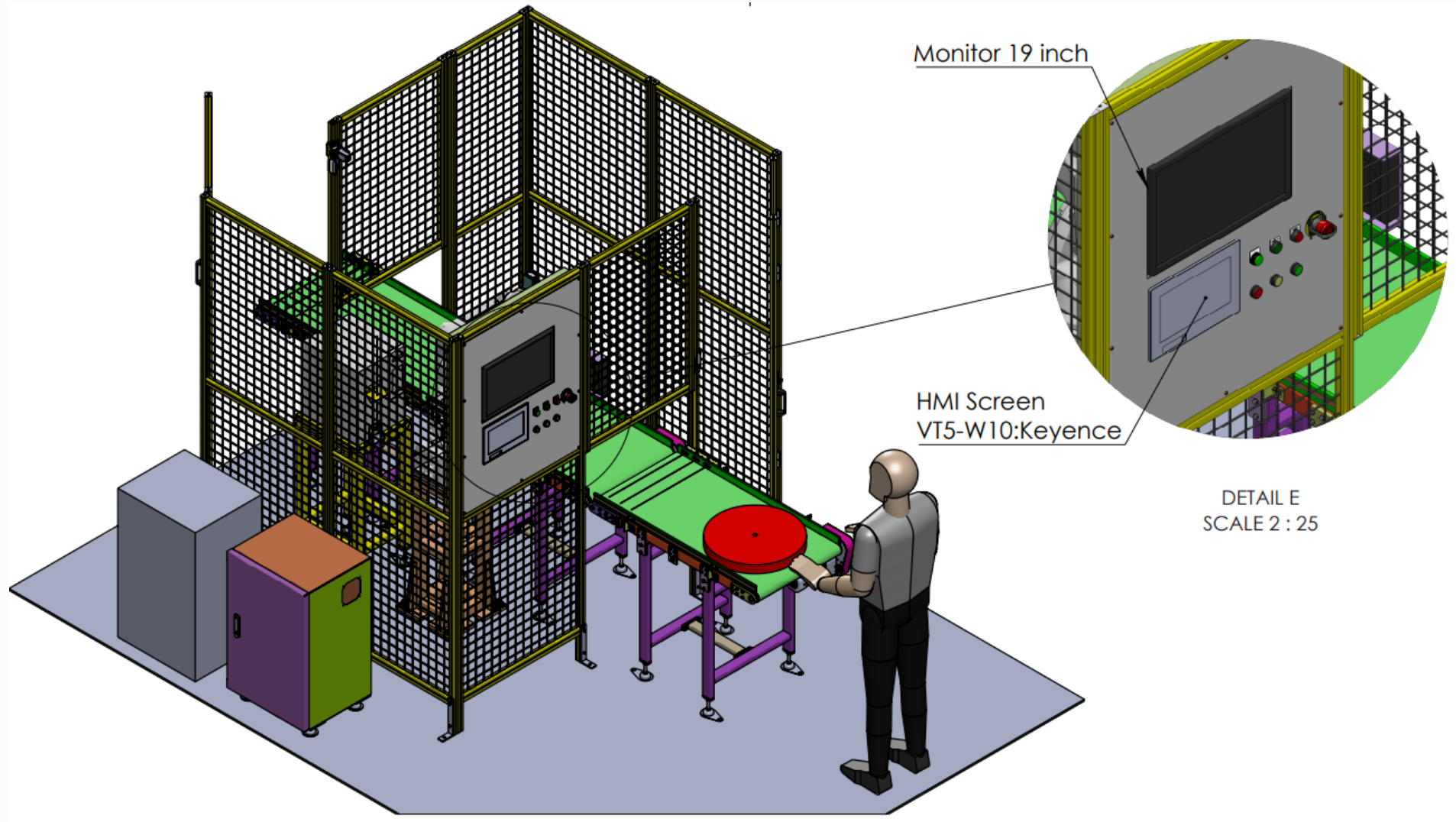
Layout machine Phase 1



Layout machine Phase 2

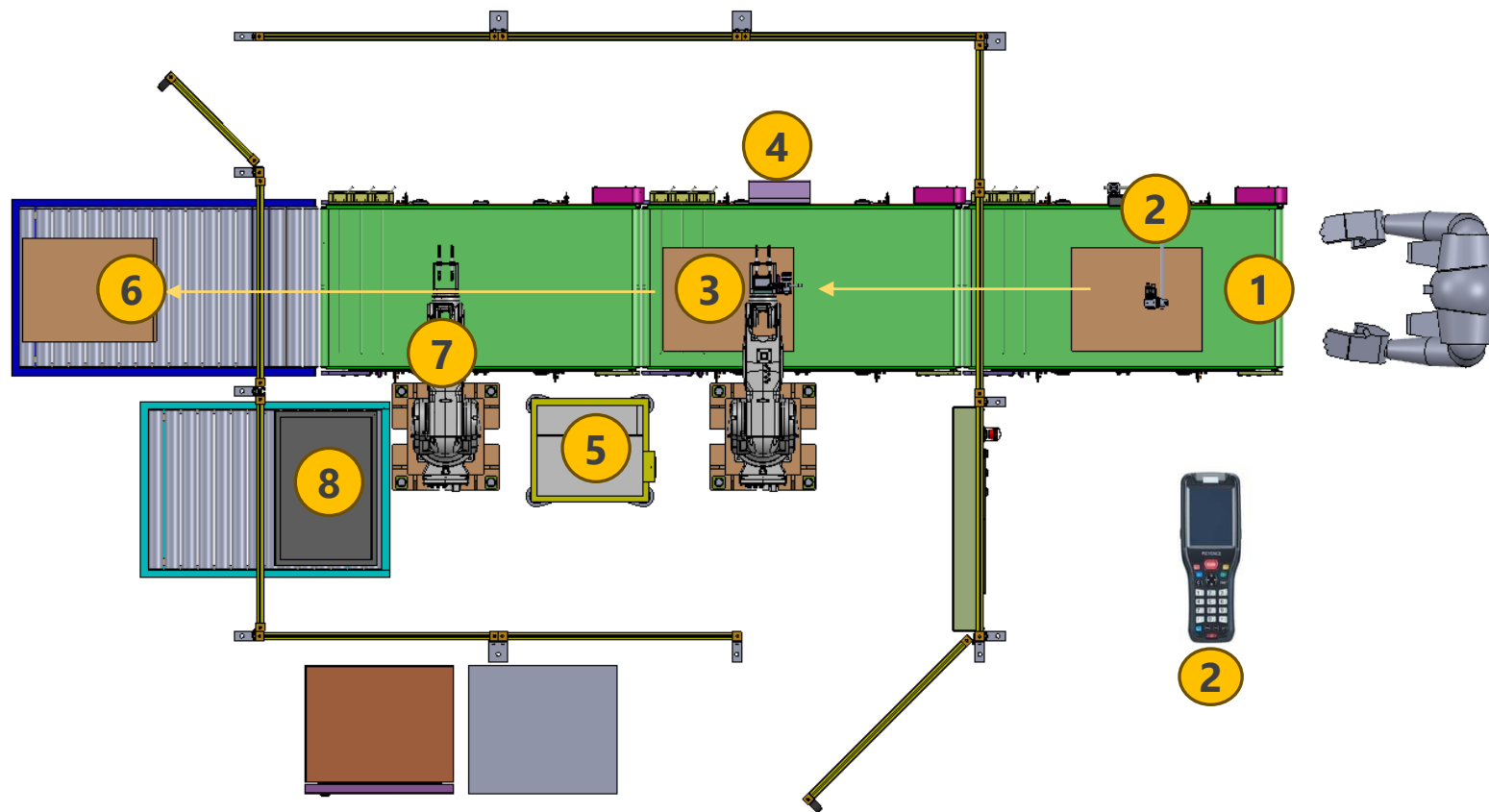


| Layout machine



Process flow

Process flow

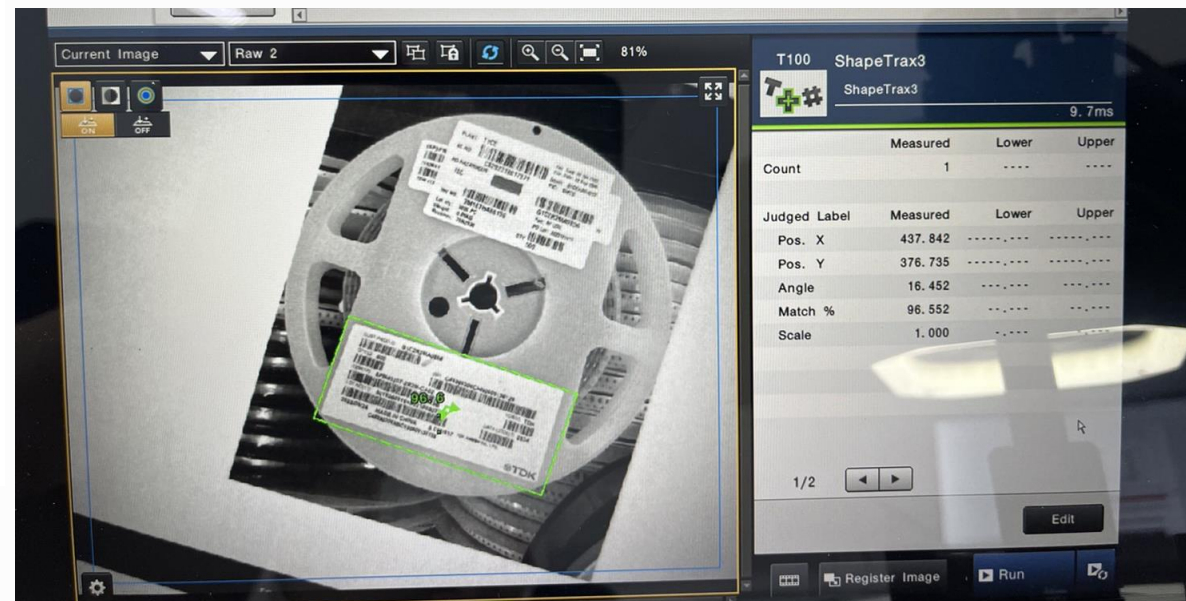
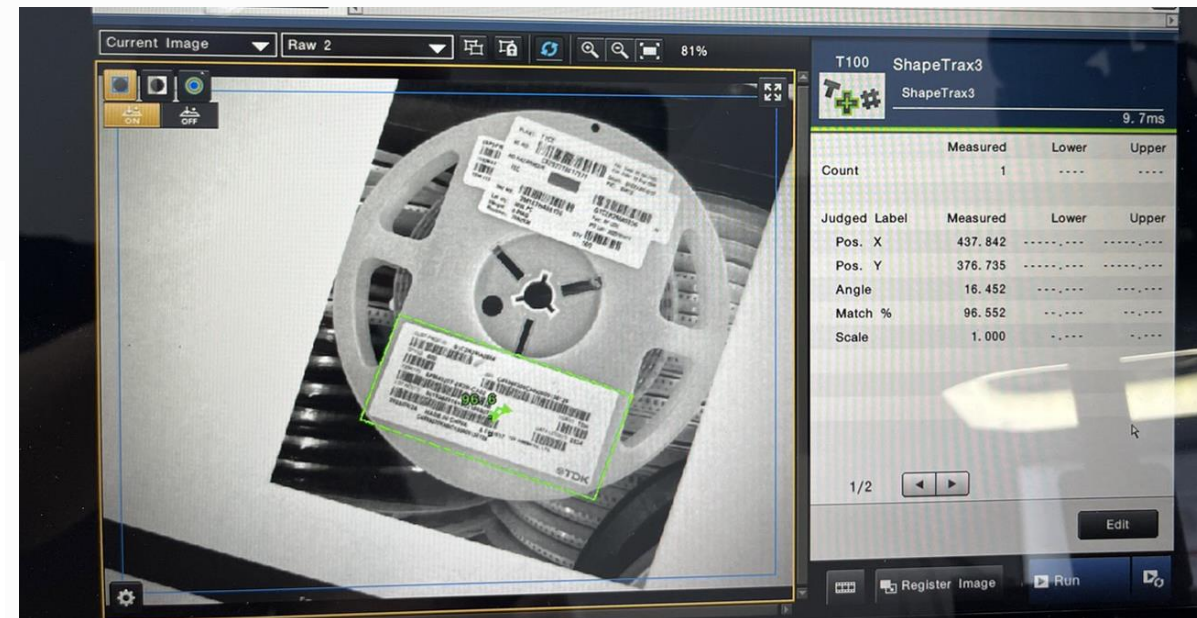
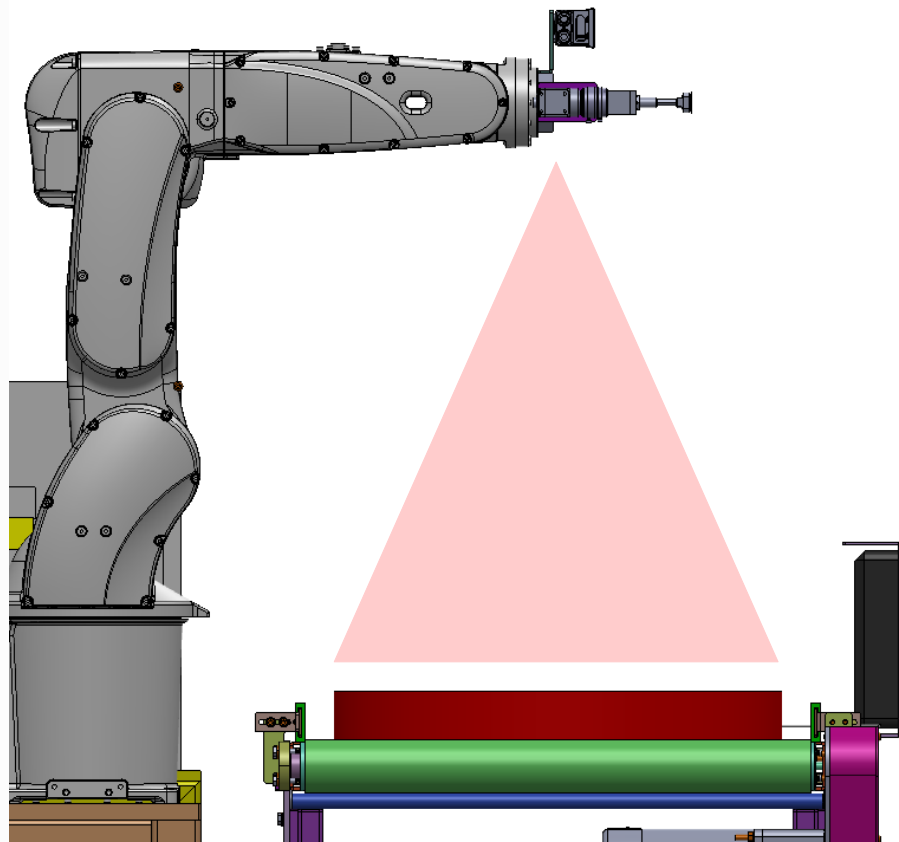


Phase 1

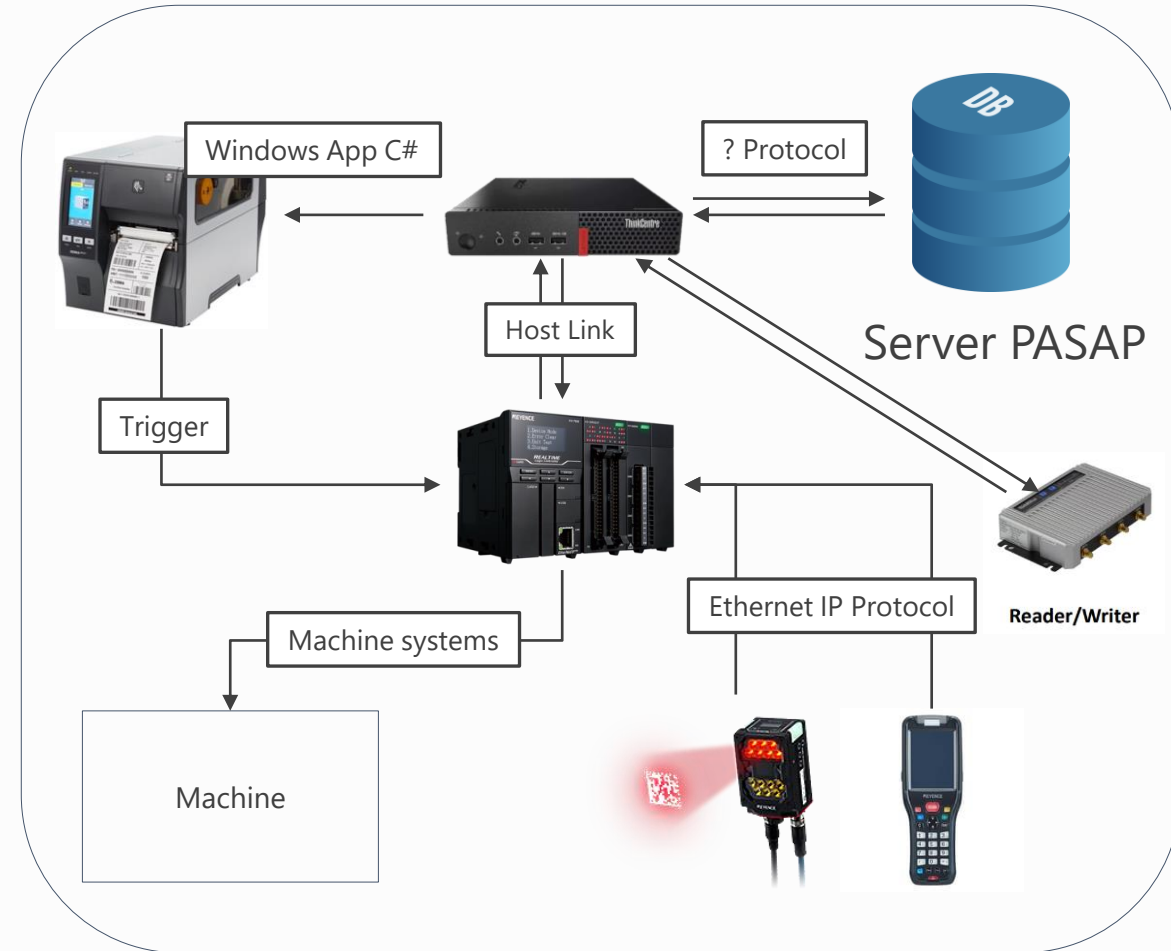
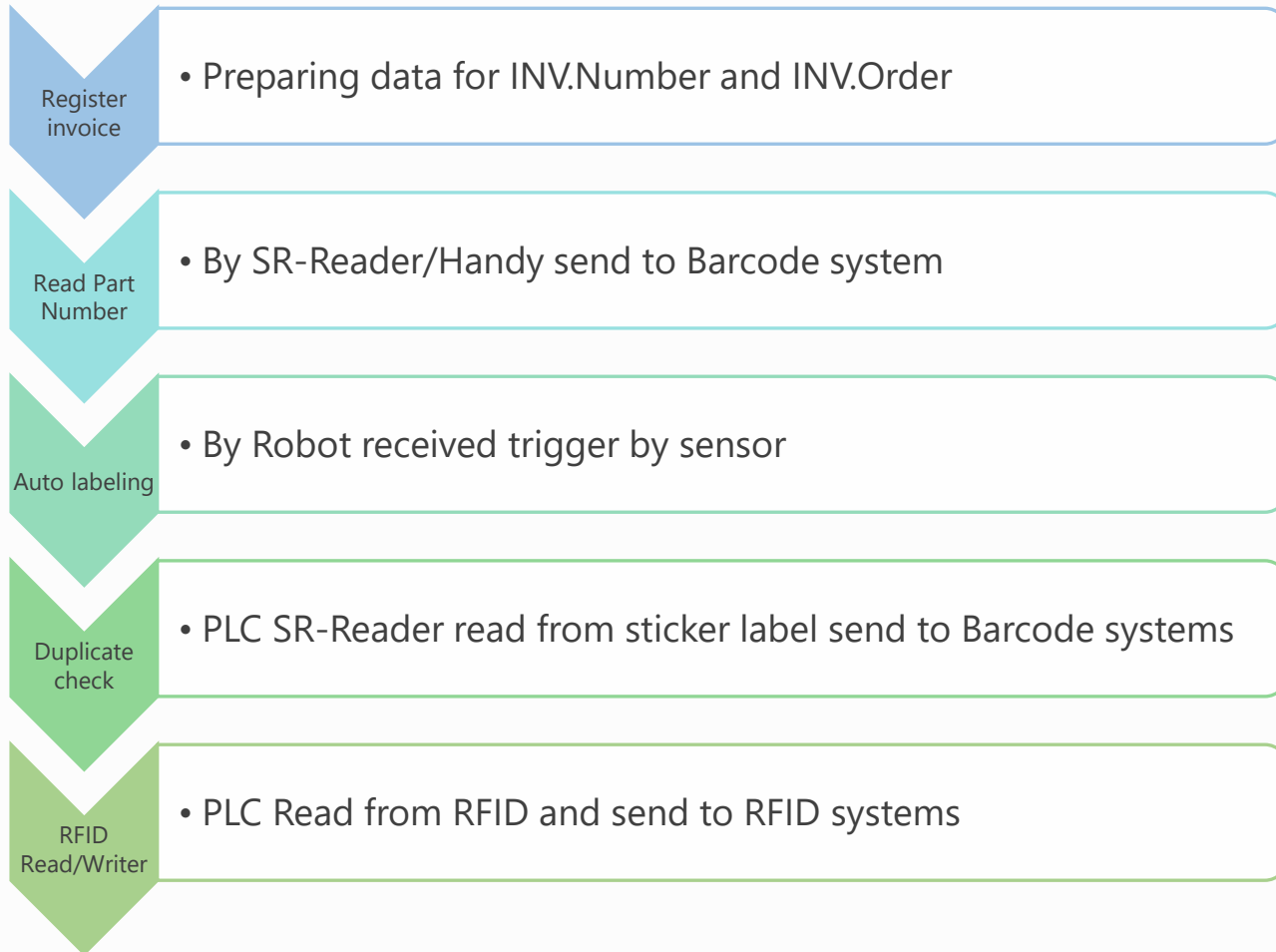
Phase 2

1. Place the work piece on the first Conveyor, after which the Conveyor will transport the work piece to the second point.
2. Use SR-Reader *In cases where work cannot be read with SR, Handy will be used instead. scan at work for select model and send the model to the computer to print labels
3. When the workpiece reaches the third position, the robot will use the camera to take pictures to find the current sticker position. and make an offset from the current position to the position to be pasted
4. After the sticker is finished, the robot will lift the Z axis and rotate the SR-Reader to read the information after the sticker is finished. 3
5. In the case of a model with RFID, information will be written as well. 4
6. After data confirmation is complete, the workpiece will be sent to the load-out location. 6
7. After the auto labeling process is completed, point number 7 will be the work sorting point. In order to put it in the box, point 8, in the case of the work being Reels, if it is a Box, it will be released to point 6.

Process flow



Operation flow



| Proposals that only we can make

With a wide range of **"Soft" x "Hard" solutions**, which is our strength,
We will solve problems in various situations at manufacturing and distribution sites.



Picking System



Handy terminal System / Tablet System



RFID System



Monitoring / Traceability System

A screenshot of a monitoring screen titled 'M/C Status' showing a grid of data for various machines. The grid has 4 columns and 4 rows. The top right corner shows the time '11:10'. The data is color-coded: green for 'RUN', red for 'STOP', and yellow for 'WARNING'.

M/C Status				11:10
LINE1 [MACHINE]	LINE1 [MACHINE]	LINE1 [MACHINE]	LINE1 [MACHINE]	LINE1 [MACHINE]
LINE2 [MACHINE]	LINE2 [MACHINE]	LINE2 [MACHINE]	LINE2 [MACHINE]	LINE2 [MACHINE]
LINE3 [MACHINE]	LINE3 [MACHINE]	LINE3 [MACHINE]	LINE3 [MACHINE]	LINE3 [MACHINE]
LINE4 [MACHINE]	LINE4 [MACHINE]	LINE4 [MACHINE]	LINE4 [MACHINE]	LINE4 [MACHINE]
LINE5 [MACHINE]	LINE5 [MACHINE]	LINE5 [MACHINE]	LINE5 [MACHINE]	LINE5 [MACHINE]
LINE6 [MACHINE]	LINE6 [MACHINE]	LINE6 [MACHINE]	LINE6 [MACHINE]	LINE6 [MACHINE]
LINE7 [MACHINE]	LINE7 [MACHINE]	LINE7 [MACHINE]	LINE7 [MACHINE]	LINE7 [MACHINE]
LINE8 [MACHINE]	LINE8 [MACHINE]	LINE8 [MACHINE]	LINE8 [MACHINE]	LINE8 [MACHINE]
LINE9 [MACHINE]	LINE9 [MACHINE]	LINE9 [MACHINE]	LINE9 [MACHINE]	LINE9 [MACHINE]
LINE10 [MACHINE]	LINE10 [MACHINE]	LINE10 [MACHINE]	LINE10 [MACHINE]	LINE10 [MACHINE]
LINE11 [MACHINE]	LINE11 [MACHINE]	LINE11 [MACHINE]	LINE11 [MACHINE]	LINE11 [MACHINE]
LINE12 [MACHINE]	LINE12 [MACHINE]	LINE12 [MACHINE]	LINE12 [MACHINE]	LINE12 [MACHINE]
LINE13 [MACHINE]	LINE13 [MACHINE]	LINE13 [MACHINE]	LINE13 [MACHINE]	LINE13 [MACHINE]
LINE14 [MACHINE]	LINE14 [MACHINE]	LINE14 [MACHINE]	LINE14 [MACHINE]	LINE14 [MACHINE]
LINE15 [MACHINE]	LINE15 [MACHINE]	LINE15 [MACHINE]	LINE15 [MACHINE]	LINE15 [MACHINE]
LINE16 [MACHINE]	LINE16 [MACHINE]	LINE16 [MACHINE]	LINE16 [MACHINE]	LINE16 [MACHINE]
LINE17 [MACHINE]	LINE17 [MACHINE]	LINE17 [MACHINE]	LINE17 [MACHINE]	LINE17 [MACHINE]
LINE18 [MACHINE]	LINE18 [MACHINE]	LINE18 [MACHINE]	LINE18 [MACHINE]	LINE18 [MACHINE]
LINE19 [MACHINE]	LINE19 [MACHINE]	LINE19 [MACHINE]	LINE19 [MACHINE]	LINE19 [MACHINE]
LINE20 [MACHINE]	LINE20 [MACHINE]	LINE20 [MACHINE]	LINE20 [MACHINE]	LINE20 [MACHINE]



Contact



info@tomastc.com



TH/EN: +66-81-012-6064 (Anek)
JP/TH/EN: +66-94-552-3097 (Nozaki)



TOMAS TECH



<http://www.tomastc.com>



7/1(3C) Soi Sukhumvit 103 (Udomsuk
46) Sukhumvit Bang Na, Bangkok 10260

